

Exploring Self Employment Possibilities

DO YOU HAVE WHAT IT TAKES TO BE AN ENTREPRENEUR?

Self Employment Picture In BC (2018)

- Approximately 508,700 small businesses in BC (fewer than 50 employees)
- Accounted for 35% of BC GDP (26% in 2012)
- 428,400 fewer than 5 employees (83%)
- 315,200 self-employed without paid help (61%)
- Accounts for 98% of all businesses in BC
- Small business in BC employs 1,090,700 people
- Just over 50% of small business fail in the first five years
 - There are risks to being self-employed
 - But many 'business failures' are owners finding other employment opportunities

WorkBC Centre

Community Futures North Fraser 

Self Employment Services Eligibility

Self-Employment services may be available to individuals who meets WorkBC Basic Eligibility Criteria and is one of the following client types:

- *El Clients;*
 - *(Active EI) Currently on EI or;*
 - *(Reachback) Have been on EI within the last five years or;*
 - *(Premiums Paid Eligibility) Have earned \$2,000 or more and paid employment EI premiums in at least 5 of the last 10 years.*
- *General Clients with a Disability; and*
- *BCEA PWD and PPMB Clients.*

In addition, suitable Clients will have:

- *Demonstrated they are unable to obtain Sustainable Employment in the local labour market;*
- *Entrepreneurial aptitude and a business start-up contribution;*
- *Sufficient product/service knowledge;*
- *Experience related to their business concept;*
- *A business concept that is viable in the local labour market, acceptable and will not negatively impact the community;*
- *Demonstrated a lack of entrepreneurial skills, training and/or experience; and*
- *Completed an orientation on Self-Employment through Community Futures.*

Self Employment Services Living Supports

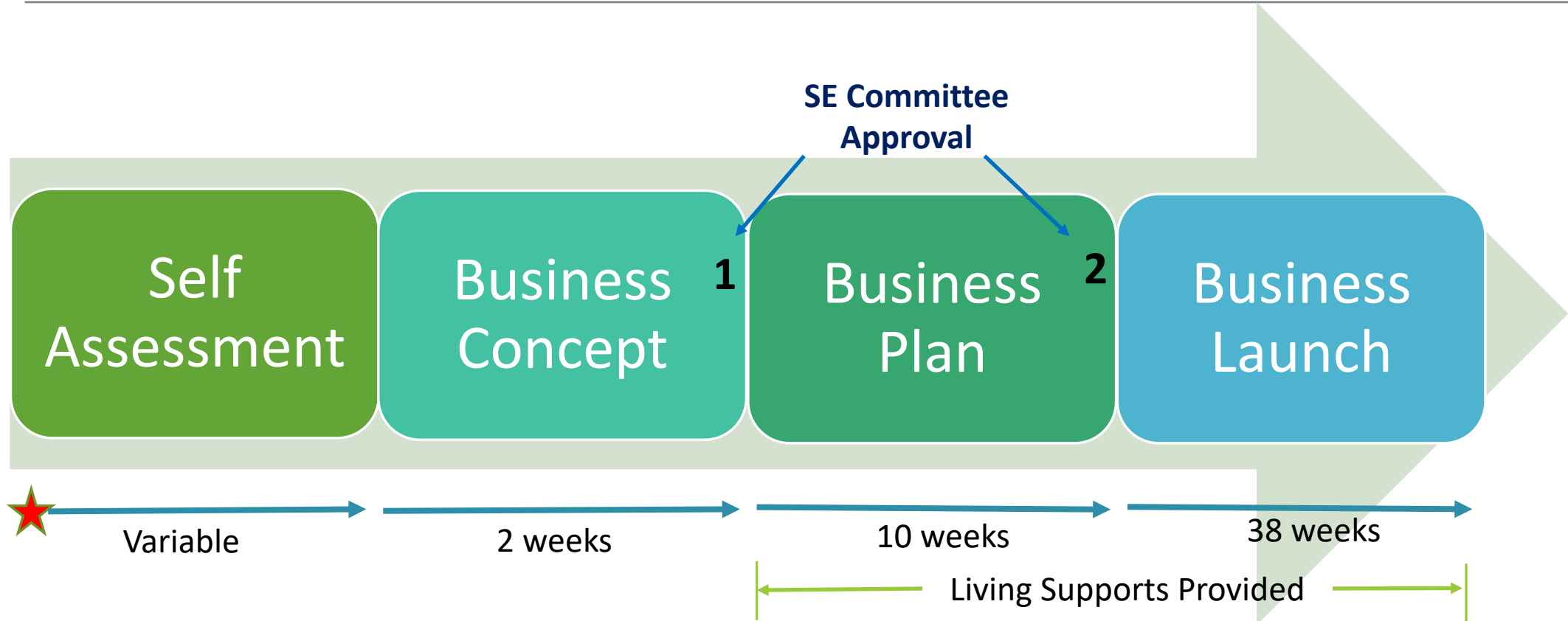
Possible benefits
for up to 48
weeks (bi-weekly)

- 10 weeks for **Business Plan Development (BPD)**
- 38 weeks for **Business Launch and Implementation (BPI)**

Additional
potential
supports

- Daycare and transportation during BPD phase

The Self Employment Services



Self Employment Services Stages

Orientation & Assessment

- 1.5-hour workshop
- Complete the Self-Employment Readiness Assessment
- Complete the Personal SWOT and Family Budget

Concept

- 7-hour workshop
- Complete the CF Business Plan
 - Research your business idea
 - Interview customers, suppliers and competitors, min of 5 interviews
- Any business funding resolved

WorkBC Centre

Community
Futures North Fraser



Business Plan

- 4 workshops over two weeks each 4 hours long (assignments with each workshop) – times may have to be adapted.
- 3 one-on-one sessions to support creation of your business plan
- Complete a thorough business plan
- Present your business plan to the SE Committee

Business Launch

- Open and operate your business
- 2 workshops, Bookkeeping, and Sales and Networking
- 3 one-on-one sessions
- Monthly reports and check in's with facilitator

Self Employment Services Stages

Entrepreneurs are people who:

Recognize opportunities where others see chaos and confusion

Are catalysts for change in the marketplace

Challenge the unknown and continuously create the future



Entrepreneurs undertake the organization, management and assumption of risks of a business venture.

Entrepreneurs...

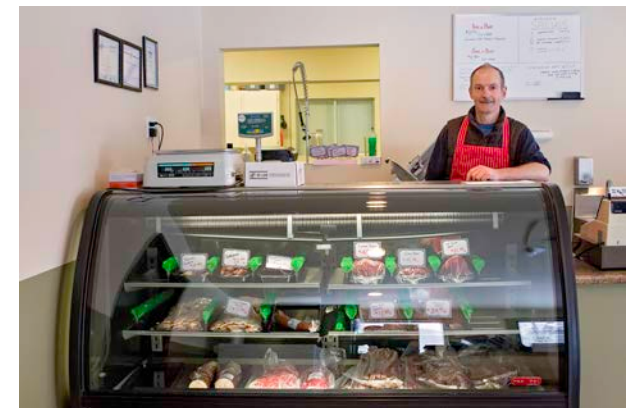
Ideas, Opportunities & Business Options

You Have an Idea – Where Do You Go From Here?

Consider Entrepreneurship For Yourself

- The Business
- People Interaction
- Competition
- Location
- Ethical Considerations
- Lifestyle/Workstyle
- Required Capital
- Skills

Successful Self-Employed clients



An Opportunity Can Become A Business



Is Your Idea a Good One?



Can you make money?



Can you “see” the market?



Do you know how you will stand out?



What might get in your way?

Successful Clients

[HTTPS://VIMEO.COM
/403427588](https://vimeo.com/403427588)

WorkBC Centre



What to do next?

You can apply for case management services at <https://apply.workbc.ca>

Create a BCeID, register an online employment services application.

If you have already are participating in case management services, please contact your WorkBC Services Specialist today to request a referral to the next Self Employment Orientation at Community Futures North Fraser.



WorkBC Abbotsford

1-833-314-1030

WorkBC Mission

1-833-314-1042